

HAC、HAD系列 缓冲器



辅件类
HAC/HAD
HR
HAC/D附
气动辅件



订购码

HAC	25	50	2	N
系列代码	轴套外牙	行程	撞击速度	缓冲帽
HAC:多孔固定式		6-150mm	1:高速 2:中速 3:低速	空白:带缓冲帽 N:不带缓冲帽
HAD:可调整式				
HACD:多向缓冲式				

HAC、HAD系列 缓冲器

ISO9001:2015 CE

HAC系列

辅件类
HAC/HAD
HR
HAC/D附
气动辅件

规格

项目	行程	最大吸收能量	小时吸收能量	最大有效重量			最高撞击速度		
				1	2	3	1	2	3
HAC-0806	6	2	7,200	0.5	2	6	2	1	0.5
HAC-1005	5	3	10,800	1	3	7	3	1.5	0.8
HAC-1008	8	4	14,400	2	4	9	3	1.5	0.8
HAC-1210	10	5	18,000	5	10	30	2	1.5	0.8
HAC-1412	12	15	36,000	8	50	100	3	1.5	0.8
HAC-1416	16	20	40,000	10	70	150	3	1.5	0.8
HAC-1420	20	25	48,000	12	80	160	3	1.5	0.8
HAC-2020	20	40	48,000	30	200	700	3.5	2	1
HAC-2030	30	50	54,000	30	200	700	3.5	2	1
HAC-2050	50	60	66,000	60	400	1200	3.5	2	1
HAC-2525	25	80	60,000	200	800	1500	4	2.5	1
HAC-2540	40	120	84,000	300	1200	2000	4	2.5	1
HAC-2550	50	98	98,000	15	40	160	4	2.5	1
HAC-2580	80	150	127,500	20	50	200	4	2.5	1
HAC-3660	60	250	125,000	400	1500	2400	4	2.5	1
HACD-2030	30	45	54,000	40	300	900	3.5	2	1
HACD-2035	35	52	62,400	40	200	650	3.5	2	1

*工作温度-10~80°C

HAD系列

规格

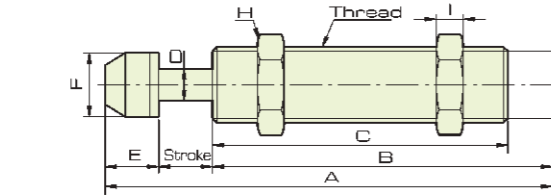
项目	行程	最大吸收能量	小时吸收能量	最大有效重量	最高撞击速度
HAD-1410	10	20	24,000	80	3.2
HAD-1415	15	22	26,400	120	3.2
HAD-2016	16	25	32,000	200	3.6
HAD-2025	25	39	39,000	312	3.6
HAD-2525	25	85	51,000	400	3.6
HAD-2530	30	95	57,000	480	3.6
HAD-2540	40	100	84,000	700	3.6
HAD-2550	50	98	98,000	720	4.2
HAD-2580	80	150	127,500	800	4.2
HAD-3625	25	150	90,000	1,400	3.2
HAD-3650	50	300	108,000	1,400	3.2
HAD-4225	25	260	130,000	3,000	3.6
HAD-4250	50	500	155,000	4,000	4.8
HAD-4275	75	750	187,000	6,000	4.8
HAD-64050	50	12,000	1,560,000	12,727	1.6
HAD-64100	100	24,000	1,920,000	18,181	1.6
HAD-64150	150	36,000	2,520,000	23,636	1.6

*工作温度-10~80°C

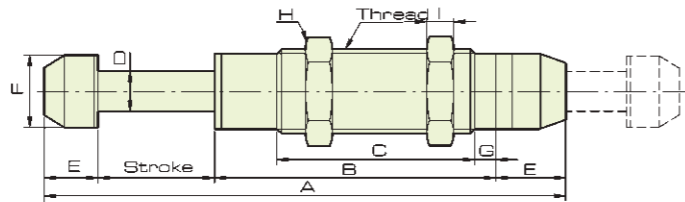
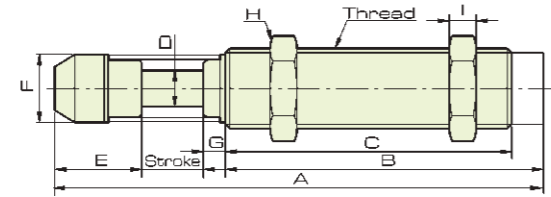
辅件类
HAC/HAD
HR
HAC/D附
气动辅件

外形尺寸

- HAC-2540
- HAC-3660



- HAC-2030
- HAC-2035



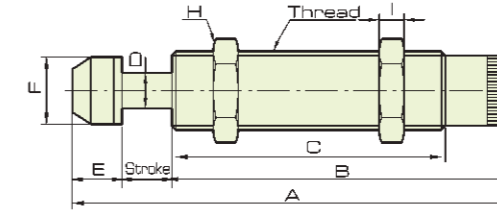
尺寸表

规格/符号	Thred	A	B	C	D	E	F	G	H	I
HAC-0806	M8×1.0	50	38	33	2.8	6	6.6	-	11	3
HAC-1005	M10×1.0	38.7	27.7	22.9	3	6	8.6	-	12.7	3
HAC-1008	M10×1.0	57	43	38	3	6	8.6	-	12.7	3
HAC-1210	M12×1.0	69.5	50	45.5	3	9.5	10.3	-	14	4
HAC-1412	M14×1.5	102.3	76	67	4	14.3	12	-	19	6
HAC-1416	M14×1.5	125.3	95	86	4	14.3	12	-	19	6
HAC-1420	M14×1.5	129.3	95	86	4	14.3	12	-	19	6
HAC-2020	M20×1.5	148	110	101	6	18	18	-	26	8
HAC-2030	M20×1.5	158	110	101	6	18	18	-	26	8
HAC-2050	M20×1.5	235	167	158	6	18	18	-	26	8
HACD-2030	M20×1.5	189	123	44	6	18	18	5	26	8
HACD-2035	M20×1.5	223	123	40	6	15	18	3	26	8
HAC-2525	M25×1.5	155.5	111	101	6	19.5	22	-	32	10
HAC-2540	M25×1.5	213	137	117	8	36	22	10	32	10
HAC-2550	M25×1.5	240	170.5	100	8	19.5	22	-	32	10
HAC-2580	M25×1.5	336.5	237	100	8	19.5	22	-	32	10
HAC-3660	M36×1.5	248	162	134	10	26	35	17	46	15

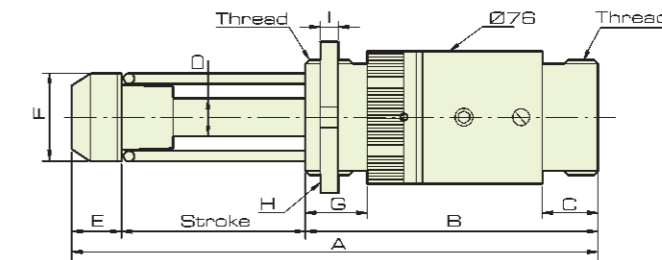
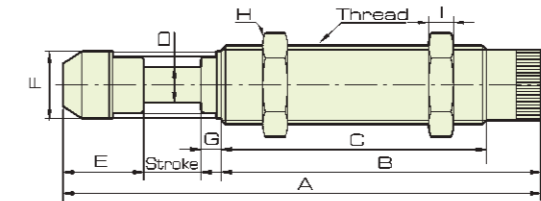
辅件类
HAC/HAD
HR
HAC/D附
气动辅件

外形尺寸

- HAD-2540
- HAD-3625
- HAD-3650



- HAD-64050
- HAD-64100
- HAD-64150



规格

规格/符号	Thred	A	B	C	D	E	F	G	H	I
HAD-1410-N	M14×1.5	-	88.5	72.5	4	-	-	-	19	6
HAD-1410	M14×1.5	112.8	88.5	72.5	4	14.3	12	-	19	6
HAD-1415-N	M14×1.5	-	88.5	72.5	4	-	-	-	19	6
HAD-1415	M14×1.5	117.8	88.5	72.5	4	14.3	12	-	19	6
HAD-2016-N	M20×1.5	-	117	101	6	-	-	-	26	8
HAD-2016	M20×1.5	151	117	101	6	18	18	-	26	8
HAD-2025-N	M20×1.5	-	117	101	6	-	-	-	26	8
HAD-2025	M20×1.5	160	117	101	6	18	18	-	26	8
HAD-2525-N	M25×1.5	-	118.5	101	8	-	-	-	32	10
HAD-2525	M25×1.5	163	118.5	101	8	19.5	22	-	32	10
HAD-2530-N	M25×1.5	-	118.5	101	8	-	-	-	32	10
HAD-2530	M25×1.5	168	118.8	101	8	19.5	22	-	32	10
HAD-2540	M25×1.5	220	144.5	117	8	36	-	10	32	10
HAD-2550	M25×1.5	247.5	178	100	8	19.5	22	-	32	10
HAD-2580	M25×1.5	344	244.5	100	8	19.5	-	12.5	32	10
HAD3625	M36×1.5	183.8	133	103	10	25.8	35.5	10	46	10
HAD-3650	M36×1.5	246.8	171	134	10	25.8	35.5	17	46	15
HAD-4225	M42×1.5	186.4	127.5	88	12	33.9	44.5	28.5	50	15
HAD-4250	M42×1.5	240.9	157	117.5	12	33.9	44.5	28.5	50	15
HAD-4275	M42×1.5	301.4	187.5	148	12	33.9	44.5	28.5	50	15
HAD-64050	UNF21/2-12	247.8	146	26	20	51.8	59	23	76.2	9.4
HAD-64100	UNF21/2-12	247.8	196	26	20	51.8	59	23	76.2	9.4
HAD-64150	UNF21/2-12	467.8	256	26	20	51.8	59	23	76.2	9.4

HR系列 油压稳速器



HR15

HR30

辅件类
HAC/HAD
HR
HAC/D附
气动辅件

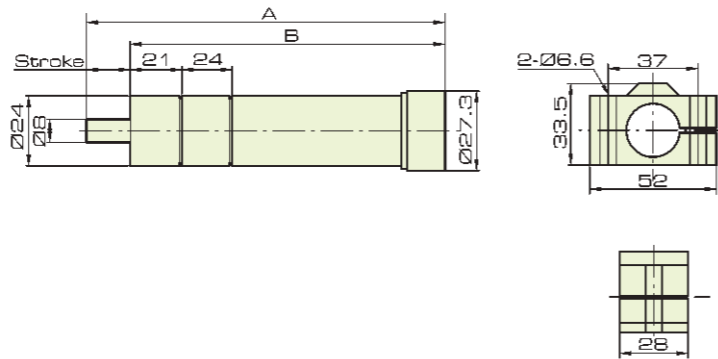
订购码



HR:可调整式油压稳速器

外形尺寸

HR系列



尺寸表

规格/符号	A	B	最大行程	工作温度	最大负荷
HR15	151	136	15	-10~85	550
HR30	203	172	30	-10~85	550
HR60	280	219	60	-10~85	550
HR80	336	256	80	-10~85	550
HR100	390	290	100	-10~85	550

HAC、HAD系列 缓冲器附件

ISO9001:2015 CE

订购码



HSC:缓冲器定位螺帽

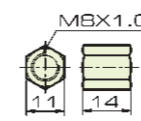
内牙规格
F:M36~M64



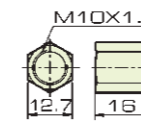
辅件类
HAC/HAD
HR
HAC/D附
气动辅件

外形尺寸

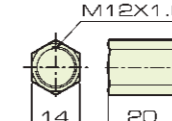
HSC-08



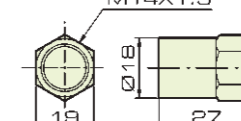
HSC-10



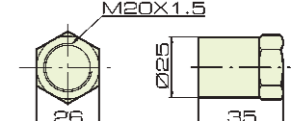
HSC-12



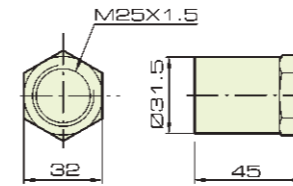
HSC-14



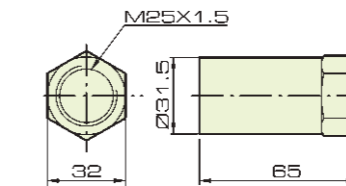
HSC-20



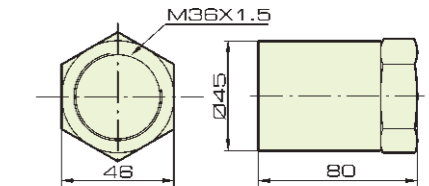
HSC-25



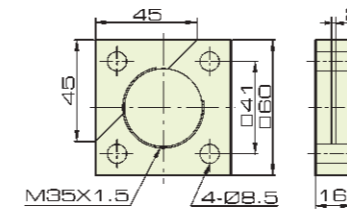
HSC-40



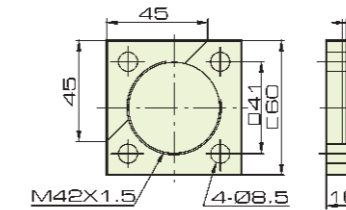
HSC-50



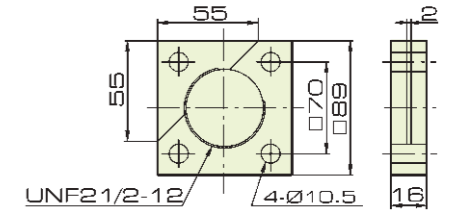
F-36



F-42



F-64



选用

规格	HSC-08	HSC-10	HSC-12	HSC-14	HSC-20	HSC-25	HSC-40	HSC-50	F36	F42	F64
选用项目	HAC-0806	HAC-1005 HAC-1007 HAC-1008	HAC-1210	HAC-1412 HAC-1415 HAC-1416 HAC-1420 HAD-1410 HAD-1415	HAC-2015 HAC-2020 HAC-2030 HAC-2050 HACD-2030 HAD-2016 HAD-2025	HAC-2525 HAC-2550 HAC-2580 HAD-2525 HAD-2530 HAD-2550 HAD-2580	HAC-2540 HAD-2540	HAC-3660 HAD-3625 HAD-3650	HAC-3660 HAD-3650	HAD-4225 HAD-4250 HAD-4275	HAD-46015 HAD-64100 HAD-64150